

Multipurpose Powder Based Portable Fire Extinguishers

(Stored Pressure / Cartridge Type)

One of most powerful & efficient Fire Extinguisher in the market. This ABC type fire extinguisher is suitable for Fire of Paper, Wood, Cloth, Flammable liquids (Petrol, Kerosene, Paints), Gases (LPG, Acetylene) & Electrical. You can Fight with any type of fire.



IS : 15683 : 2006



CML No. 2589173



1 Kg.

2 Kg.

4 Kg.

6 Kg.

9 Kg.



Paper, Wood, Plastics,
Fabric, Rubber, Trash.



Gasoline, Oil, Grease,
some Paints and Solvents.



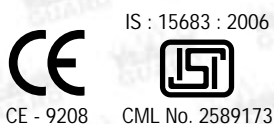
Energized Electrical Equipments,
Appliances, Computers, Circuit
Breakers, Wiring.

Capacity (Kg.)	1, 2, 4, 6, & 9
Confirming IS Code	IS 15683 : 2006,
Extinguishing Media	Dry Powder IS 14609 (Mono Ammonium Phosphate)
Minimum Effective Discharge	Above 90%
Discharge Time	Not Less than 13 sec.
Test Pressure BAR	35 BAR
Charged Pressure BAR	15 BAR
Temperature Range	+ 30o C to + 55o C
Operating Value	Squeeze Grip type with Nozzle or Hose Pipe.
Available in	MAP 40%, 60%, & 90%
Effective Against	A, B, C, & Electrically Started Fires.

Water Based Portable Fire Extinguishers

(Stored Pressure / Cartridge Type)

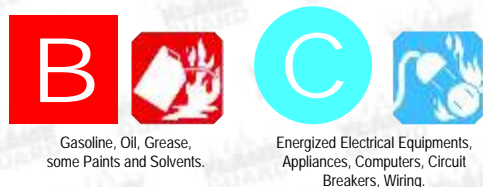
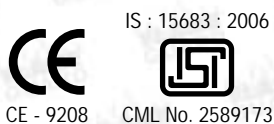
Our Water Fire Extinguishers are suitable for Class A Fire are still one of the most useful and cost-effective ways to put free burning materials such as Paper, Wood & Fabrics.



DCP Portable Fire Extinguishers

(Stored Pressure / Cartridge Type)

This B, C Gas Fire Extinguisher is perfect for Class B & C fires involving Petrol, Alcohol, Industrial Chemicals and many other substances.



Model	Water Based Co2	DCP (Dry Chemical Powder)
Capacity	9 Ltr.	4, 6, & 9 Kg.
Confirming IS Code	IS 15683 : 2006,	IS 15683 : 2006,
Extinguishing Media	Water	Dry Powder IS 4308 (Sodium Bi-Carbonate)
Minimum Effective Discharge	Above 95%	Above 90%
Discharge Time	Not Less than 13 sec.	Not Less than 13 sec.
Body Test BAR	35 BAR	35 BAR
Working Pressure BAR	15 BAR	15 BAR
Temperature Range	+50 C to +55o C	-30o C to +55o C
Operating Value	Squeeze Grip type with Nozzle or Hose Pipe.	90% Sodium Bi-Carbonet
Effective Against	A Class of Fires. Do not use at Electrically Started Fires.	Squeeze Grip type with Nozzle or Hose Pipe. B & C Class of Fires.

Mechanical Foam (AFFF) Fire Extinguishers

(Stored Pressure / Cartridge Type)

This Mechanical Foam (AFFF) Fire Extinguisher is suitable for use on burning liquids (Petrol, Kerosene, Paints) Gases (LPG, Acetylene) These extinguishes, use the squeeze grip mechanism, making them faster and easier to use. The proprietary stored pressure/Cartridge type technology also delivers high power throw, making these extinguisher extremely effective.



CE - 9208

IS : 15683 : 2006



CML No. 2589173



Paper, Wood, Plastics,
Fabric, Rubber, Trash.



Gasoline, Oil, Grease,
some Paints and Solvents.

Carbon Di-oxide Portable & Trolley Mounted Fire Extinguishers

Our Co2 is most powerful & efficient Fire Extinguisher in the market. This B, C, fire extinguisher is suitable for fire of Flammable liquids (Petrol, Kerosene, Pints), Gases (LPG, Acetylene) & Electrical Started Fire. The revolutionary new squeeze grip activation, removes all risk of freeze burn, and ensures that the user can rapidly put the extinguisher to use against a fire.



CE - 9208

IS : 15683 : 2006



CML No. 2589173



Gasoline, Oil, Grease,
some Paints and Solvents.



Energized Electrical Equipments,
Appliances, Computers, Circuit
Breakers, Wiring.



2 Kg.

3 Kg.

4.5 Kg.

6.5 Kg.

Model	Mechanical Foam (AFFF)	Co2 (Carbon Dioxide)
Capacity	9 Ltr.	2, 3, 4.5, 6.5, 9 & 22.5 Kg.
Confirming IS Code	IS 15683 : 2006,	IS : 15683 : 2006 & IS : 2878
Extinguishing Media	AFFF Foam Is 4989 (U.L. Gd.)	Carbon Di-oxide Gas. (Purity 99.9%)
Minimum Effective Discharge	Above 95%	Above 95%
Discharge Time	Not Less than 13 sec.	Not Less than 13 Sec.
Body Test BAR	35 BAR	250 BAR
Working Pressure BAR	15 BAR	-----
Temperature Range	+0o C to +55o C	-30o C to +55o C
Operating Value	Squeeze Grip type with Cartridge or Hose Pipe.	Squeeze Grip / Wheel Type with Horn Hose Pipe.
Effective Against	A and B Class of Fires. Do not use at Electrically Started Fires.	B, C & Electrically Started Fires.