



**Flexible Sprinkler Hose Fittings (A Product of Seungjin/Youngjin/Daijin)**



Available product length and type	700mm to 1800 (28'' to 70'')
Available square bar length	700mm to 1500 (28'' to 59'')
Max. working pressure	14kgf/cm <sup>2</sup> (200psi)
Max. ambient temperature	107°C (225°F)
Minimum installation Bending Radius	75mm (3'')
Bending Angles (Flow Direction)	up to 180 Degree
Largest K factor for 1/2 inch outlet	5.6[gpm/(psi) <sup>1/2</sup> ]
Largest K factor for 1/3 inch outlet	14.0[gpm/(psi) <sup>1/2</sup> ]
Intended use	Wet system and dry system



CE - 9208

**Automatic Sprinkler**



**Sidewall  
Type Sprinkler**



**Pendent  
Type Sprinkler**



**Upright  
Type Sprinkler**



CE - 9208

Temperature Rating	155° F/68°C
Glass Bulb Color	Red
Thread Size	NPT 1/2" or R 1/2"
Max. Service Pressure	175 psi
Glass Bulb Diameters (mm)	05

**Stand Post Type Water and Foam Monitor**



CE - 9208

**TECHNICAL SPECIFICATIONS**  
As Per IS : 8442

Design & Construction	As Per IS: 8442
Materiel	Seamless Mild Steel Tubes
Size of Monitor	63 mm
Size of Inlet Flange	80 mm
Construction	Welded From M.S. Seamless Pipes, Bends, etc.
Discharge Capacity	1750 LPM
Horizontal Throw	50 - 55 Meters
Rotation	360o
Elevation	58° to 30°
Joint	Swivel Type (Gun-Metal)
Jet Spray Nozzle	Gun Metal or Aluminium
Operative Pressure	0.7 N/mm <sup>2</sup> at Nozzle End
Leakage Pressure	To withstand a pressure of 2.3 N/mm <sup>2</sup>

**APPLICATION**

- Oil Sector
- Refineries
- Chemical Plants
- Fertilizers and
- Fire Tenders etc.



## Automatic Modular ABC / BC / Clean Agent Fire Extinguishers (Stored Pressure)

**CE**  
CE - 9208



ABC Powder / BC Powder / Clean Agent  
Available in 2 Kg, 5 Kg, 10 Kg & 15 Kg  
Available in Bulb Temperature : 56 - 107 Degrees

## Co2 Gas Cartridge for Use in Fire Extinguishers



**CE**  
CE - 9208

IS : 15683 : 2006



CML No. 2589173

Capacity (Kg)	20, 40, 60, 90, 120, 180, 200, 250 & 300 Gms.
Confirming IS Code	IS : 4947
Body Test BAR	250 BAR



Fire Alarm Panel



ABS Hooter



MS Hooter



Response Indicator



MS Manual Call Box



ABS Manual Call Box



Smoke Detector



Heat Detector



Electric Siren



Signs



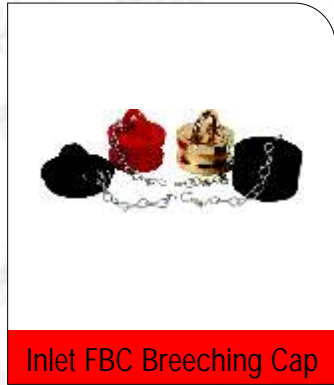
MS Cabinet



Fibre Cabinet



Manual Siren



Inlet FBC Breaching Cap



FX - 10X



FB - 5X



Multi Purpose Nozzle



Fog Nozzle



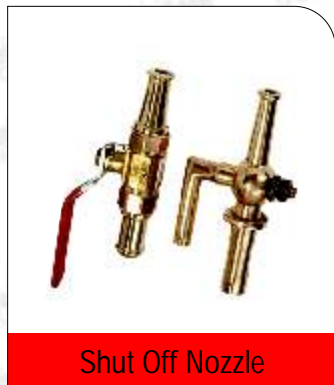
Triple Purpose Nozzle



Revolving Nozzle



Fire Suits



Shut Off Nozzle



Fire Hook



Fire Man Axe



Gun Metal Adapter



Aluminum Adapter



Stainless Steel Adapter



with Butterfly Lugs  
Gun Metal Adapter



Gun Metal Air Release Valve



Foot Valve Strainer



Gun Metal & Aluminum

Dividing Breeching



Sprinkler MV Spray Nozzle



Gun Metal

Draw of Connection



C.I. Draw of Connection



Camlock Coupling



B.A. Set



Suction Coupling



Double Female Adapter



Double Male Adapter



Adapter Double Female Lugs



Fire Blanket



Fire Bell



Fire Bucket



Water Flow Indicator